



Establishing Conservation Practices



Presentation Topics

- **Cultural Resources**
- **Concept Plans**
- **Restoration Process and Timelines**
- **Developing Conservation Plans**
- **Conservation Practice Funding/Payments**



Cultural Resources



Minnesota Conservation Reserve Enhancement Program

Historic Properties/Cultural Resources Process

CP-23 and CP-23a Wetland Practices

September 22, 2017

Minnesota Conservation Reserve Enhancement Program (MN CREP) planning and implementation of conservation practices must adhere to standards and processes of both the USDA (Farm Service Agency [FSA] and Natural Resources Conservation Service [NRCS]) for the Conservation Reserve Program (CRP) as well as the State (Board of Water and Soil Resources [BWSR]) for the Reinvest in Minnesota Program (RIM).

One critical part of the USDA FSA CRP process is compliance with the National Environmental Policy Act (NEPA) and National Historic Preservation Act (NHPA). These require federal agencies to take into account the impacts of their actions on cultural resources, including historic properties.

The MN CREP will utilize the existing cultural resource review process that is already used for the CRP. That process will also ensure that the State will address its responsibilities related to cultural resources.

In summary, the process for cultural resource reviews of CP-23 and CP-23a wetland practices is outlined below:

1. Shortly after application funding decisions are made, BWSR's Engineering Design Unit will conduct initial site evaluations and prepare concept plans for wetland restoration construction. These plans will identify proposed restoration strategies including their approximate locations. This information will be forwarded to the local SWCD and NRCS office for input and landowner review.
2. The NRCS local office (with assistance from the SWCD as requested) will complete the MN-CPA-048 form along with all required supporting data (maps, etc.) and upload this information as a single pdf file to the appropriate county folder on the Minnesota NRCS Cultural Resources SharePoint site.

NOTE – the local NRCS office (with assistance from the SWCD as requested) will also complete the NRCS-CPA-52 form, Environmental Evaluation Worksheet (FSA determination is that the CPA-52 can be used in place of the FSA 850 form), during the CRP planning process.

3. The Minnesota NRCS Cultural Resources Specialist (CRS) will review the submitted information and update the MN-CPA-048 form to reflect NRCS recommendations. The CRS will upload the updated MN-CPA-048 form to the appropriate county folder on the Minnesota NRCS Cultural Resources SharePoint site. The CRS's review and reply is intended to identify the presence or absence of previously documented cultural resources within or adjacent to the project area and make recommendations on the need for additional cultural resources investigations (identification, evaluation, and/or mitigation work) based on existing data.

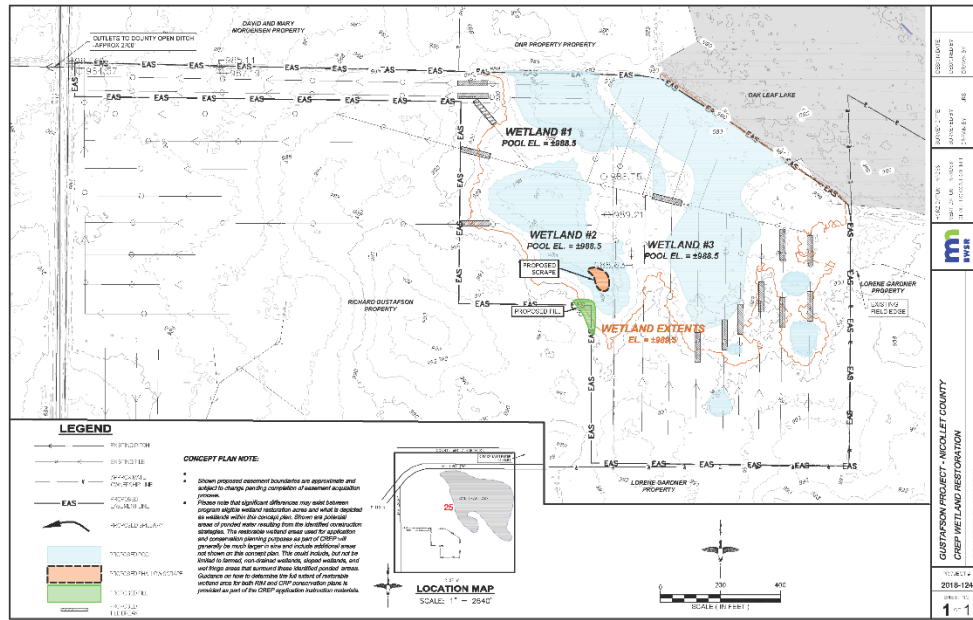
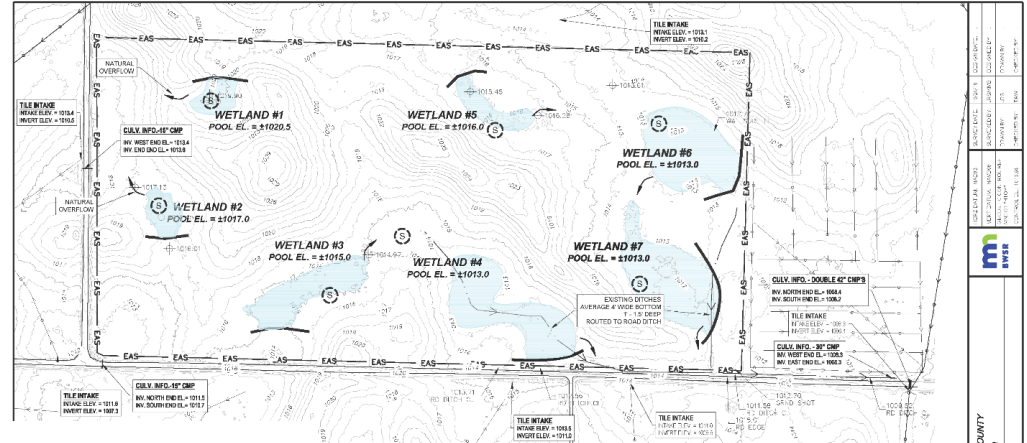


Concept Plans



Restoration Concept Plans

- Purpose
- Preliminary vs. Final
- Your Role



LEGEND

PROPOSED	PROPOSED
PROPOSED	PROPOSED
PROPOSED	PROPOSED
PROPOSED	PROPOSED
PROPOSED	PROPOSED
PROPOSED	PROPOSED
PROPOSED	PROPOSED

CONCEPT PLAN NOTE:

- Show proposed assessment boundaries are approximate and subject to change pending completion of assessment procedure.
- Please note that significant differences may exist between proposed wetland restoration areas and what is depicted on existing maps within this concept plan. There are potential areas of potential water resulting from the described construction strategies. The wettable wetland areas used for application and conservation planning purposes are part of CREP and generally do not include areas that are not included in the final assessment. The final assessment will include, but not be limited to, proposed wetlands, riparian wetlands, and wet edge areas that surround the described project area. Guidance on how to determine the full extent of restorable wetland area for 1981-1984 and CRP conservation plans is provided as part of the CRP application instruction materials.

LOCATION MAP
SCALE: 1" = 2640'

**BLUMH PROJECT - RENOVALE COUNTY
CREP WETLAND RESTORATION
CONCEPT PLAN VIEW**

2018-124
1:1



Restoration Process and Timeframes



Restoration Workload, Process and Timelines

Acquisition



Application → *Easement*



Vegetation Establishment

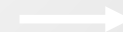


Planning → *Site Preparation* → *Seeding* → *Weed Management*

Engineering/ Construction



Site Inv. / Planning → *Design* → *Construction*





Restoration Workload, Process and Timelines

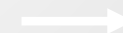
CRP-2 Handbook, Part 13 – Section 402 Establishing Approved Cover



C Permanent Covers (Continued)

Approved permanent cover is required to be seeded within 12 months after the CRP-1 effective date, according to Exhibit 11. However, NRCS or TSP, in consultation with COC or CED, may, in **developing the conservation plan, permit up to an additional 12 months**, not to exceed 24 continuous months, to seed or install the approved permanent cover if any of the following apply: **DO THIS!**

- the specific site conditions require additional time to seed the approved cover to not adversely impact the natural resources of the site or surrounding areas
- the approved grass seed, grass mixture, trees, or shrubs are not available
- seed costs will create an adverse economic hardship on the participant.





Restoration Workload, Process and Timelines

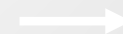
CRP-2 Handbook, Part 13 – Section 402 Establishing Approved Cover



D Additional Months to Establish Permanent Covers Authorized (Continued)

After the conservation plan is approved, COC or CED may approve a revised plan, signed pen and ink changes by the participant, to allow up to 2 additional 12-month extensions of time to seed or install the approved permanent cover if COC or CED determines that any of the following applies:

- the approved grass seed, grass mixture, trees, or shrubs are not available
- seed costs will create an adverse economic hardship on the participant
- the producer has been prevented from timely seeding the approved permanent cover because of adverse weather conditions.





Restoration Workload, Process and Timelines

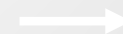


CRP-2 Handbook, Part 13 – Section 402
Establishing Approved Cover

D Additional Months to Establish Permanent Covers Authorized (Continued)

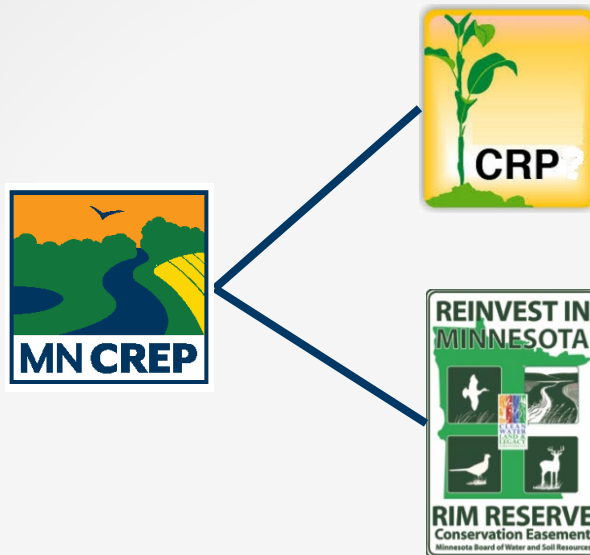
In no case shall COC, CED, or STC approve a revised conservation plan for more than a total of 36 months, original 12 month plan, plus up to 2 additional 12-month extensions, to seed the approved permanent cover. CRP-1's that do not have the approved permanent cover seeded in 36 months of the effective date shall be terminated.

Meritorious requests for authority to continue CRP-1, on which the approved permanent cover has not been seeded within 36 months of the effective date of CRP-1, may only be approved by DAFP. COC and STC may submit requests to DAFP, only if both COC or CED and STC determine the request is justified based on documented and verifiable facts of the individual case.





Developing Conservation Plans



- **Each Program Requires a Conservation Plan**
- **To the extent possible within these plans, try to have practices and associated acres match for the MNCREP acres**
- **Conservation plans and associated practices/practice acres will drive available funding for practice work**



Conservation Plan

Documents that make up RIM's Conservation Plan

- ➔ • Conservation Plan Signature Page
- Conservation Practice Plan
- Conservation Easement Practice Payment Worksheet (CEPPW)
- Conservation Plan Map

October 08

CONSERVATION PLAN FOR STATE OF MINNESOTA CONSERVATION EASEMENTS

Conservation Easement I.D.:	SWCD/County:	Easement Acres:
Principal Land Owner Name:		Easement Duration: <input checked="" type="checkbox"/> Perpetual <input type="checkbox"/> Limited (exp. date:)
Address:	City:	State: Zip Code:

This Conservation Plan is part of the Conservation Easement which is recorded on the land title. Any willful action not in compliance with this Conservation Plan is a direct violation of the Conservation Easement which is enforceable by State Law.

The Grantors, all successors, assigns, and heirs, as identified in the Conservation Easement and herein collectively referred to as "Landowners", are required to establish and maintain the conservation practices described in this Conservation Plan for the duration of the Conservation Easement. The Landowners shall establish all conservation practices described in this Conservation Plan in accordance with the easement program Conservation Practice Specifications and within the schedule provided in the attached Conservation Practice Plan.

The Landowners shall appoint a "Principal Landowner" to serve as the primary contact for implementing and distributing information pertaining to the conservation practices identified in this Conservation Plan.

The local soil and water conservation district (SWCD) will provide the Principal Landowner with the following information which is considered as "attachments" to this Conservation Plan.

- A) Conservation Practice Plan
- B) Conservation Plan Map
- C) Construction Plans (if necessary)
- D) Seeding/ Planting Plans (if necessary)
- E) Operation and Maintenance Requirements
- F) Supplementary Information (as needed):

The State will reimburse the landowner for the establishment of the conservation practices identified in the Conservation Plan documents up to the payment limits provided in Minnesota Statutes section 103F.515. A State Cost-Share Voucher certifying completion of the practice establishment is required from the SWCD before any eligible cost-share payments can be made by the State. No payments for establishing conservation practices will be made until the Conservation Easement is recorded and accepted by the state.

I hereby agree to and acknowledge my obligations associated with this Conservation Plan.

 (Principal Landowner)

 (Date)

 (Authorized SWCD Representative)

 (Date)



Conservation Plan

Documents that make up RIM's Conservation Plan

- Conservation Plan Signature Page
- ➔ • Conservation Practice Plan
- Conservation Easement Practice Payment Worksheet (CEPPW)
- Conservation Plan Map

Sheet ___ of ___

October 2008

CONSERVATION PRACTICE PLAN

Conservation Easement ID:		Principal Landowner Name:			
Prepared By:		Date Prepared:			

PRACTICE AREA <small>(one per line)</small>	PRACTICE AREA SIZE <small>(acres)</small>	CONSERVATION PRACTICE CODE TYPE		PLANNED YEAR OF PRACTICE INSTALLATION	
		PRIMARY	SUPPORTING	PRIMARY	SUPPORTING

--

 = Total Easement Acres

CONSERVATION PRACTICE CODES AND DESCRIPTIONS

RR-1a Introduced Grasses/Legumes To Be Established	RR-5 Diversion
RR-1b Introduced Grasses/Legumes Already Established	RR-6 Erosion Control Structure
RR-2a Native Grasses To Be Established	RR-7 Grass Waterway
RR-2b Native Grasses Already Established	RR-8 Wetland Restoration
RR-3a Tree and/or Shrub Planting To Be Established	RR-11 Highway Windbreak
RR-3b Tree and/or Shrub Planting Already Established	RR-12 Wetland Creation
RR-4a Field Windbreak To Be Established	RR-13 Existing Wetland
RR-4b Field Windbreak Already Established	RR-14 Existing Watercourse/Ditch
	RR-FP Wildlife Food Plot



Documents that make up RIM's Conservation Plan

- Conservation Plan Signature Page
- Conservation Practice Plan
- ➔ • Conservation Easement Practice Payment Worksheet (CEPPW)
- Conservation Plan Map

August-14

CONSERVATION EASEMENT PRACTICE PAYMENT WORKSHEET (CEPPW)

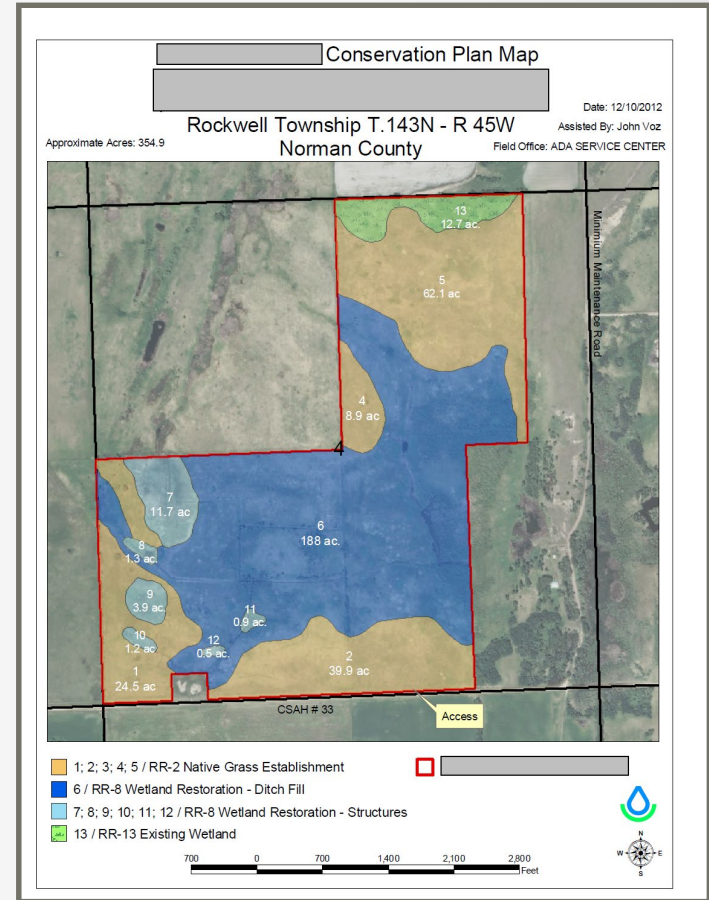
Easement ID No.:		Landowner Name:		Prepared By:		Date Prepared:	
PRACTICE CODE & SUBCODE	PRACTICE AREA(s)	PRACTICE ACRES			PRACTICE DOLLARS		
		A	B	C = (A+B)	D	E = (CxD)	
		Primary	Supporting	Total	Max. Allowed Per Acre ¹	Max. Available	
RR-1	Introduced Grasses	a. To Be Established				\$150	
		b. Already Established					
RR-2	Native Grasses	a. To Be Established				\$300	
		b. Already Established					
RR-3	Tress/Shrubs	a. To Be Established				\$400	
		b. Already Established					
RR-4	Field Windbreak	a. To Be Established				\$400	
		b. Already Established					
RR-5	Diversion						
RR-6	Erosion Control Structure						
RR-7	Grass Waterway						
RR-8	Wetland Restoration				\$600		
RR-11	Highway Windbreak				\$400		
RR-12	Wetland Creation						
RR-13	Existing Wetland						
RR-14	Existing Watercourse/Ditch						
RR-FP	Wildlife Food Plot						
				= TOTAL EASEMENT ACRES			

¹ The dollar values in this column represent the maximum amount payable per acre that will be allowed for the identified practice. In no case will payments be made that are in excess of actual costs, less other partner contributions. Custom farm rate data will be taken in to consideration when reviewing total amounts submitted for reimbursement.



Documents that make up RIM's Conservation Plan

- Conservation Plan Signature Page
- Conservation Practice Plan
- Conservation Easement Practice Payment Worksheet (CEPPW)
- ➔ • Conservation Plan Map





Conservation Plan

Principal Landowner's Name:		Prepared By:		Date Prepared:				
PRACTICE AREA	PRACTICE AREA SIZE	CONSERVATION PRACTICE CODE TYPE		PLANNED YEAR OF PRACTICE INSTALLATION		Print Form	PRACTICE CODE	DESCRIPTION
<i>(one per line)</i>	<i>(acres)</i>	PRIMARY	SUPPORTING	PRIMARY	SUPPORTING			
							RR-1a	Introduced Grasses/Legumes To Be Established
							RR-1b	Introduced Grasses/Legumes Already Established
							RR-2a	Native Grasses To Be Established
							RR-2b	Native Grasses Already Established
							RR-2PP	Pollinator Planting To Be Established
							RR-3a	Tree and/or Shrub Planting To Be Established
							RR-3b	Tree and/or Shrub Planting Already Established
							RR-4a	Field Windbreak To Be Established
							RR-4b	Field Windbreak Already Established
							RR-5	Diversion
							RR-6	Erosion Control Structure
							RR-7	Grass Waterway
							RR-8	Wetland Restoration
							RR-11	Highway Windbreak
							RR-12	Wetland Creation
							RR-13	Existing Wetland
							RR-14	Existing Watercourse/Ditch
							RR-FP	Wildlife Food Plot
<input style="width: 50px; text-align: center;" type="text" value="0.00"/> = TOTAL EASEMENT ACRES						PARTNER INFORMATION/ OTHER INFORMATION		
PRACTICE CODE	TOTAL PRACTICE ACRES	MAX PAYMENT RATE/ACRE	MAXIMUM PRACTICE FUNDS AVAILABLE					
RR-1a:	0.00	\$150	\$0					
RR-2a:	0.00	\$300	\$0					
RR-2PP	0.00	\$600	\$0					
RR-3a:	0.00	\$400	\$0					
RR-4a:	0.00	\$400	\$0					
RR-8:	0.00	\$600	\$0					
TOTAL			\$0					
<input type="button" value="Cons Plan Signature Page"/>		<input checked="" type="button" value="Conservation Practice Plan"/>		<input type="button" value="O&M Plan"/>		<input type="button" value="+"/>		



What and When to Submit to BWSR?

- **With Title Commitment**
 - Conservation Practice Plan
 - CEPPW
 - Conservation Plan Map

- **With Signed RIM Easement**
 - Conservation Plan signature page





Additional Conservation Plan Documents

- **Construction Plans (*when applicable*)**
- **Seeding/Planting Plans**
- **Operation and Maintenance Requirements**
- **Supplementary Information (*as needed*)**



Conservation Plan

1 OPERATION AND MAINTENANCE PLAN

Perpetual Conservation Easement Program

Landowner name: Arnette Sandbo-Hirman

Program: RIM 42.4 acres Easement # 34-15-09-02

You, as Principal Landowner, are responsible for the care and maintenance of the permanently established structure(s) and/or components identified in the Conservation Plan as part of the Perpetual Conservation Easement.

CONSERVATION PRACTICE CODES AND DESCRIPTIONS

Initial / date

<u>RR-2a</u>	<u>Native Grasses & Flowers to be Established</u>
<u>RR-8</u>	<u>Wetland Restoration</u>
<u>RR-WS</u>	<u>Wildlife Structures</u>

Although not all problems can be foreseen and some may not be controllable, the following are some guidelines to help insure the successful management of the practices. None of the following guidelines prohibit the landowner from low impact recreation activities. Recreational activities that do not degrade the quality of the vegetation nor harm the constructed areas are allowed at any time. The Technical Agency referred to in the following guidelines is the Kandiyohi County Soil & Water Conservation District (SWCD).

Operation and Maintenance – The landowner (sponsor) will, for the life of the easement:

RR-1, RR-2a, RR-5, RR-6, RR-7, RR-9: Maintain the practice to provide adequate erosion control and provide wildlife habitat. Control noxious weeds by spot mowing or other method approved by the Technical Agency. Not harvest for consumptive or non-consumptive use or allow grazing by animals in a controlled setting.

RR-3, RR-4, RR-10, RR-11: Maintain the practice to provide adequate erosion control and provide wildlife habitat. Control noxious weeds by spot mowing or other method approved by the Technical Agency. Not prune, shear, or harvest woody vegetation unless approved by the Technical Agency. A separate RR-10 Woodlot Management Plan is available from the Technical Agency and MN Department of Natural Resources and must be incorporated in the Conservation Plan.

RR-5, RR-6, RR-7, RR-8, RR-12, RR-13: Maintain the practice as designed by the Technical Agency and/or an assigned certified engineer (where applicable). Not allow woody vegetation to grow on constructed practices. Make periodic inspections for damage caused by vandalism, and any other activity caused by humans, animals, insects, or act of nature that may negatively impact the practice components.

RR-FP: Maintain this practice to provide food and cover for wildlife. Not harvest the food plot for any reason. Control noxious weeds. Re-establish the area, at landowner's expense, to a Technical Agency approved cover if the food plot area is discontinued for any reason. Size and location of the food plot shall be pre-approved by the Technical Agency.

RR-WS: Wildlife Structures. Placement and use of structures such as deer stands, waterfowl blinds, and/or wildlife observation. These structures shall be pre-approved by the Technical Agency. Landowner shall maintain these structures for safety reasons and assume all liability related to their design, placement, and use. Landowner must follow all State and Federal laws, rules, and regulations relating to structures used for hunting. The Technical Agency requires that the structures not exceed 40 square feet in size. In addition, no roof or windows are allowed but sidewalls are acceptable. Total numbers of structures shall be approved by the Technical Agency. Wildlife Structures are allowed on any practice area.

In addition the specific practice maintenance guidelines, the landowner shall:

Make periodic inspections of all practices and report all problems to the Technical Agency.

Allow Technical Agency personnel to make periodic inspections and shall follow recommendations if required.

Re-establish, at landowner/sponsor expense, any and all practices damaged or destroyed by fault of the landowner/operator.

Not allow cropping, haying, grazing, buildings, or any other activity that is not consistent to the intent of the conservation easement. If in question, consult with technical agency.

I, the landowner, will for the life of the Conservation Easement, care for and maintain to the best of my abilities as required. I am aware of each of the Conservation Practice areas identified in the Conservation Plan. I understand the maintenance guidelines as listed above.

Landowner (sponsor) _____
Date

I have discussed the above listed maintenance guidelines with the landowner (sponsor).

Authorized Technical Agency Representative _____
Date



Guidance for Preparing RIM Conservation Plans

- Similar Practice Areas (P.A.s) should not be adjacent (ex. no RR-2a next to RR-2a)
- Practice areas cannot extend over a stream
- For areas already vegetated and no work is planned, use “Already Established” appropriate P.A.s, such as RR-1b, RR-2b, and RR-3b.

CONSERVATION PRACTICE CODES AND DESCRIPTIONS

RR-1a	Introduced Grasses/Legumes To Be Established	RR-5	Diversion
RR-1b	Introduced Grasses/Legumes Already Established	RR-6	Erosion Control Structure
RR-2a	Native Grasses To Be Established	RR-7	Grass Waterway
RR-2b	Native Grasses Already Established	RR-8	Wetland Restoration
RR-3a	Tree and/or Shrub Planting To Be Established	RR-11	Highway Windbreak
RR-3b	Tree and/or Shrub Planting Already Established	RR-12	Wetland Creation
RR-4a	Field Windbreak To Be Established	RR-13	Existing Wetland
RR-4b	Field Windbreak Already Established	RR-14	Existing Watercourse/Ditch
		RR-FP	Wildlife Food Plot



Guidance for Preparing RIM Conservation Plans

- All drained and altered wetland areas should be claimed as RR-8 practice (see Appendix 1 of RIM General Program Guidance document)
- RR-8's should have RR-2a supporting practice if vegetative work is planned within any part of defined wetland area (most always)

CONSERVATION PRACTICE CODES AND DESCRIPTIONS

RR-1a	Introduced Grasses/Legumes To Be Established	RR-5	Diversion
RR-1b	Introduced Grasses/Legumes Already Established	RR-6	Erosion Control Structure
RR-2a	Native Grasses To Be Established	RR-7	Grass Waterway
RR-2b	Native Grasses Already Established	RR-8	Wetland Restoration
RR-3a	Tree and/or Shrub Planting To Be Established	RR-11	Highway Windbreak
RR-3b	Tree and/or Shrub Planting Already Established	RR-12	Wetland Creation
RR-4a	Field Windbreak To Be Established	RR-13	Existing Wetland
RR-4b	Field Windbreak Already Established	RR-14	Existing Watercourse/Ditch
		RR-FP	Wildlife Food Plot



Guidance for Preparing RIM Conservation Plans

It is preferred for the conservation plan map to be on an aerial photo with practice areas digitized (ArcMap)



Amending/Changing a Conservation Plan

Before

First Practice Payment

After

Revision Request Form

Practice Implementation Request Form (PIRF)



09177

CONSERVATION EASEMENT REVISION REQUEST FORM

A. EASEMENT APPLICATION INFORMATION

Name of Applicant: _____ Easement Application No.: _____

B. REVISION INFORMATION

	PREVIOUS REQUEST	REVISED REQUEST (N/C No Change)
TOTAL EASEMENT ACRES	_____	_____
TOTAL EASEMENT PAYMENT	_____	_____
TOTAL CONSERVATION PLAN COST-SHARE FUNDS REQUESTED	_____	_____

Include a revised copy of the CREP calc sheet (if applicable), CEFW & CEPWP with each revision request. Include aerial photo accurately showing any revisions to the easement area (if applicable).

C. SWCD ACKNOWLEDGMENT

I certify that the landowner(s) are aware of and in agreement with the proposed financial changes to the easement and/or conservation practice payments and any associated changes to the easement area, as indicated in item B above. I also certify that the landowner(s) understand the effect these proposed changes will have on their financial obligations for establishing the conservation practices identified in the conservation plan.

(SWCD Representative) _____ (Date)

D. BWSR REVIEW AND APPROVAL

I have reviewed this request to revise the previously agreed to easement area and/or financial terms for this conservation easement.

(Conservation Easement Section Reviewer) _____ (Date)

I approve this request to revise the previously agreed to easement area and/or financial terms for this conservation easement.

(Conservation Easement Section Manager) _____ (Date)

Use this form prior to submittal of the first cost share voucher.

09177

PRACTICE IMPLEMENTATION/AMENDMENT REQUEST FORM

LINE	FY	FUND	AGENCY	ORG/SUB	APPR UNIT	OBJECT/SUB
AMOUNT			DESCRIPTION			

Vendor # _____ PO # _____ P/# _____

PAYEE INFORMATION

Easement I.D. Number: _____ Landowner Name: _____ Address: _____

INSTALLATION REQUEST Reinstallation or Conservation Plan Amendment

Has Practice Failed Before? (Applies to Reinstallations Only) Proposed Date of (Re)installation (Month/Year)

Y or N

Practice Type	Practice Acres/SI	Acres to be Treated	Max. CS Payment Rate	Max. CS \$'s Available	Total CS \$'s Requested	Est. Total Cost
Explain Reason for Failure or Conservation Plan Amendment (attach additional sheets if necessary):						

ESTABLISHMENT REQUEST

Practice Type	Practice Acres/SI	Total Practice Acres	Max. CS Payment Rate	Max. CS \$'s Available	Total CS \$'s Available
C/S \$'s per acre paid to date: Per Acre C/S \$'s Remaining: Acres to be Treated: Total C/S \$'s Available: Total C/S \$'s Requested: Est. Total Cost:					
Describe Activity (attach additional sheets if necessary):					

SIGNATURES

I hereby certify that to the best of my knowledge, the information in this form is accurate and in accordance with the terms of the conservation easement program. I also agree to and acknowledge my obligations associated with this request.

(Landowner Signature) _____ (Date) _____
(Authorized SWCD Representative) _____ (Date)

---For BWSR Use Only---

Request Approved
 Request Not Approved
 Comments Attached

(BWSR Easement Coordinator) _____ (Date)



Conservation Practice Funding/Payments



C/S Level for MN CREP III

CCC will pay up to 50 percent of the authorized reimbursable eligible costs of establishing eligible conservation practices. The State will pay the remainder of the total authorized reimbursable eligible costs of establishing conservation practices, less CRP

- ❖ Practice Incentive Payments (PIPs) are not part of cost-share/practice payments made to cooperator
- ❖ BWSR will provide practice payments for wetland restoration work, site prep, seed, and seeding but will not provide practice payments for establishment (clippings) or ongoing maintenance



Conservation Practice Funding/Payments

August-14

CONSERVATION EASEMENT PRACTICE PAYMENT WORKSHEET (CEPPW)

Easement ID No.:	Landowner Name:	Prepared By:	Date Prepared:
------------------	-----------------	--------------	----------------

PRACTICE CODE & SUBCODE	PRACTICE AREA(s)	PRACTICE ACRES			PRACTICE DOLLARS	
		A Primary	B Supporting	C = (A+B) Total	D Max. Allowed Per Acre ¹	E = (CxD) Max. Available
RR-1 Introduced Grasses	a. To Be Established				\$150	
	b. Already Established					
RR-2 Native Grasses	a. To Be Established				\$300	
	b. Already Established					
RR-3 Tress/Shrubs	a. To Be Established				\$400	
	b. Already Established					
RR-4 Field Windbreak	a. To Be Established				\$400	
	b. Already Established					
RR-5 Diversion						
RR-6 Erosion Control Structure						
RR-7 Grass Waterway						
RR-8 Wetland Restoration					\$600	
RR-11 Highway Windbreak					\$400	
RR-12 Wetland Creation						
RR-13 Existing Wetland						
RR-14 Existing Watercourse/Ditch						
RR-FP Wildlife Food Plot						



= TOTAL EASEMENT ACRES

¹ The dollar values in this column represent the maximum amount payable per acre that will be allowed for the identified practice. In no case will payments be made that are in excess of actual costs, less other partner contributions. Custom farm rate data will be taken in to consideration when reviewing total amounts submitted for reimbursement.



Construction Funds

RIM – Practice Payment (Reimbursement)

- \$600 per acre – (RR-8 Wetland Restoration Areas)
- This max may be exceeded – To be determined on a case by case basis in consultation with BWSR engineering and RIM program staff





Construction Funds

CRP – Cost-Share (NTE 50%)

- **Level 1 – \$350 per acre**
Where Minimal Construction Work is Needed
- **Level 2 – \$700 per acre**
Where More Complex (costly) Work is Needed
- **Will want to recommend Level 2 most of the time.**
- **These cost-share levels are not to exceed 50% of the eligible practice costs as determined by FSA**



Minnesota CRP Practice Cost Share Rates Per Practice (Continued)

CP23A – Wetland Restoration, Non Floodplain

*

Component Code	Description	50% Not To Exceed (NTE)	50% COC Eligible Cost (COC Cost)	Unit
1501	Seedbed Prep & Seeding – New Land	\$43.00		Acre
1502	Seedbed Prep & Seeding – Enhanced “Existing Forage” <u>8/</u>	\$54.00		Acre
1503	Temporary Cover – Seedbed Prep, Seed & Seeding – New Land	\$34.00		Acre
1575	Temporary Cover – Seedbed Prep, Seed & Seeding – Enhanced Existing Forage	\$50.00		Acre
1504	Practice Establishment After Planting Grasses – Chemical and/or Mechanical	\$11.00		Acre
1505	Fertilizer/Minerals	\$26.00		Acre
1508	40 Point Grass Mixture	\$36.00		Acre
1556	Native Species Mixture	\$63.00		Acre
1557	Native Grass Mixture – 50 Points	\$63.00		Acre
1511	Trees/Shrubs & Planting (Non-Forestry)	\$85.00		100
1532	Level 1 Restoration (Exceeds 1 acre in size) <u>6/</u>	\$350.00		Acre
1533	Level 2 Restoration (Exceeds 1 acre in size) <u>7/</u>	\$700.00		Acre
1570	Level 1 Restoration (Less than 1 acre in size) <u>6/</u>	\$350.00		Project
1571	Level 2 Restoration (Less than 1 acre in size) <u>7/</u>	\$700.00		Project

Continued on Next Page

Conservation Practice Funding/Payments

Wetland and Upland Area Vegetation Establishment

Wetland Restoration Construction & Critical Area Stabilization



Minnesota CRP Practice Cost Share Rates Per Practice (Continued)

CP23A – Wetland Restoration, Non Floodplain (Continued)

*

Component Code	Description	50% Not To Exceed (NTE)	50% COC Eligible Cost (COC Cost)	Unit
1562	Mid Contract Management – Inter-seeding - Introduced Legumes (Seed)	\$1.00		Lb
1563	Mid Contract Management – Inter-seeding - Native Forbes & Legumes (Seed)	\$1.00		Oz
1564	Mid Contract Management – Inter-seeding - Seedbed Prep & Seeding	\$20.00		Acre
1565	Mid Contract Management – Inter-seeding - Fertilizer/Minerals	\$19.00		Acre
1001	Grasses Already Established	0.00		Acre
1002	Trees Already Established	0.00		Acre

2/ – Component only applies when substantiated as needed by the designated technician according to 2-CRP (Rev. 5) Paragraph 491 D.



6/ – Level 1 restoration is for those sites where minimal work is needed such as breaking tile, plugging a ditch, etc.

7/ – Level 2 Restoration is for those sites where more complex restoration work is needed, such as earthwork for construction of dikes, dams, levees, dugouts, etc; or where more complex ditch plugs occur.

8/ – May also be used where dense grass and/or legume vegetation exists.

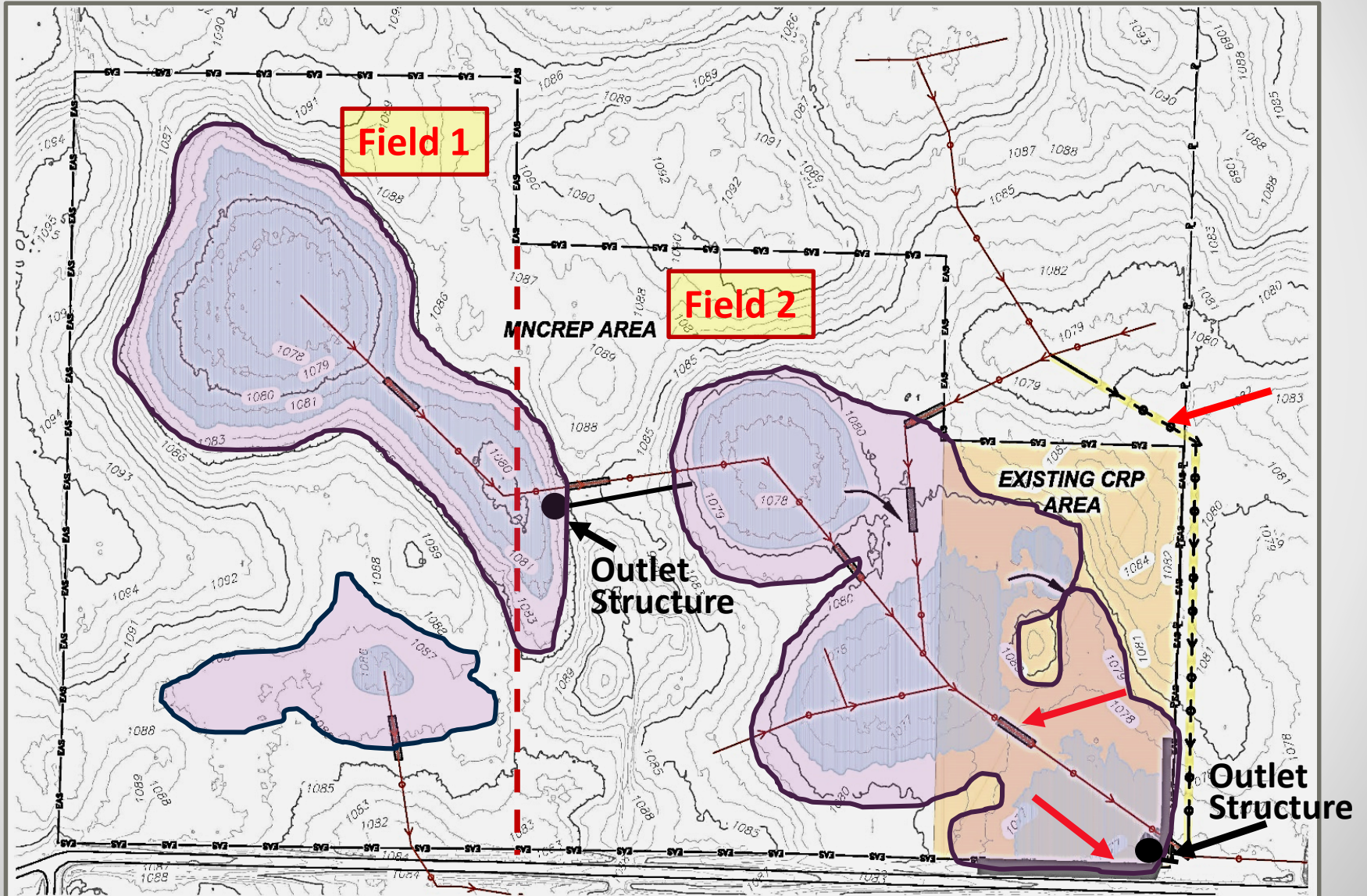
NOTE: This component (1502) MAY NOT be applied if there has been a temporary cover component applied to the practice. In such cases, use component code 1501.

11/ – Burn level of payment shall be based on the total acres of prescribed burn in the approved conservation plan scheduled for a fiscal year. Not to exceed actual acres burned.



What If?

Conservation Practice Funding/Payments





Conservation Practice Funding/Payments

- **Work with FSA and attempt to consolidate sites with multiple fields into one field (when possible)**
- **If multiple fields, try to apply same cost-share rate (Level 1 / Level 2) to all fields**
- **Coordinate early and often with BWSR and FSA**

Program	Easement/ Contract Acres ¹	Wetland Restoration Acres ²	CRP CP23A C-S Level ³	C-S / Practice Rate per Acre	Wetland Restoration Funds Available ⁴
RIM				\$ 600	
CRP			<input type="checkbox"/> 1 <input type="checkbox"/> 2	\$ 350 \$ 700	



Requesting Cost-Share/Practice Payment

Considerations:

Process both CRP and RIM payments simultaneously

Pros: Payments get made quicker

Cons: FSA determination of C-S is not what was expected

Process CRP cost-share payment before finalizing and processing RIM payment

Pros: All payments will be correct

Cons: Longer time-frame to get all payments out



Conservation Practice Funding/Payments

(5/05)

COST-SHARE VOUCHER & PRACTICE CERTIFICATION FORM

A. PAYEE INFORMATION (Check if name and address change)						B. PROJECT INFORMATION					
Name:						I.D. Number					
Address:						BWSR Program: <input type="checkbox"/> Easement <input type="checkbox"/> Cost-Share <input type="checkbox"/> Other					
City, State, & Zip						Practice Type (one only)		Practice Area(s)		Acres Completed:	
C. COST INFORMATION						Type of Request					
Basis of Request <input type="checkbox"/> Installation <input type="checkbox"/> Establishment <input type="checkbox"/> Reinstallation						<input type="checkbox"/> Partial <input type="checkbox"/> Final					
Completion Date:											
R/I	ITEM					QUANTITY	UNIT	UNIT PRICE		COST	
R - Receipted Item / Invoiced Item I - In-Kind Contribution (attach additional sheets as necessary)						Total:					
I certify that this is an accurate and true summation of the actual costs and quantities of material, labor, and equipment used on the above project. In cases where the receipts included items not used on the project, I have corrected them accordingly.											
_____ (Payee Signature)						_____ (Date)					
D. PAYMENT INFORMATION						EASEMENT PROGRAMS [(c) cannot exceed (a) - (b)]					
TOTAL COST OF PRACTICE <input type="text"/>						(a) Maximum Payment Allowed <input type="text"/>					
OTHER FUNDING SOURCES (please identify source)						(b) Total of Previous Payments <input type="text"/>					
<input type="text"/>						(c) Balance Available <input type="text"/>					
<input type="text"/>						COST-SHARE PROGRAM ONLY [(b) + (c) cannot exceed 75% of (a)] <i>(DO NOT USE THIS SECTION FOR EASEMENT PROGRAMS)</i>					
<input type="text"/>						(a) Total Cost Approved: <input type="text"/>					
<input type="text"/>						(b) Other public funds: <input type="text"/> % <input type="text"/>					
Cost-Share Reimbursement Requested <input type="text"/>						(c) District Share: <input type="text"/> % <input type="text"/>					
LANDOWNER / LAND OCCUPIER COST: <input type="text"/>						(c) District Share: <input type="text"/> % <input type="text"/>					
E. SWCD CERTIFICATION						SWCD CERTIFICATION					
I certify that an inspection has been performed and that the items identified in part C have been completed and are in accordance with the required practice standards and specifications.						I certify that I have reviewed this voucher and all supporting information and that to the best of my knowledge and belief, the quantities and billed costs or disbursements are accurate and are in accordance with terms of the program identified.					
_____ (Conservation District Technical Representative)						_____ (Authorized SWCD Representative)					
_____ (Date)						_____ (Date)					



Questions?

